

# Retail case study

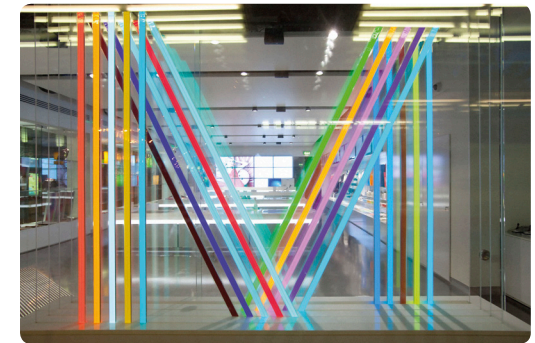
## Manchester Visitors Centre Manchester

Contractor |  
Timescale |  
Architect |

GB Building Solutions  
2 Weeks  
BDP



The state-of-the-art Manchester Visitors Centre is a perfect place to begin a visit to the region. As one of the first European visitor centres to use Microsoft Surface Tables; Manchester Visitors Centre provides a gallery of information, integrating innovative information systems alongside contemporary merchandising.



### Brief

Our brief was to design and manufacture furniture in both solid surfaces, laminate/metallic panels and mirror laminates - providing local manufacturing expertise and a highly skilled workforce

Innova worked closely with both the architect and contractor to create the complex design ensuring a high end inspirational space, showcasing all that Manchester has to offer.

*“ One such honeypot location is Manchester, which rates as one of England’s most sophisticated visitor centres ”*

Guardian



# Manchester Visitors Centre Manchester

**Carcase** | Manufactured from 18mm MF MDF  
**Worktops** | Solid surface  
**Edging** | ABS Colour matched edging

**Handles** | Handleless base units  
**Hinge** | 240° pivot safety hinges



## Solution

Innova developed interactive touch screen Microsoft surface tables linked to a media wall, together with a POS display wall for retail merchandising.

Working closely with a local software agency, Innova manufactured three monolith style units to house Microsoft surface tables, cash till and display cabinets. Set into white solid surface, the units sit in the main central area of the visitors' centre. Iridescent panels and mirror effect laminate with complimentary edging was used to deliver a 3D floating central section, complete with feature lighting.

A hi-end flexible slat style shelving system, integrated with low level lockable storage was installed to display and store Point of Sale items.